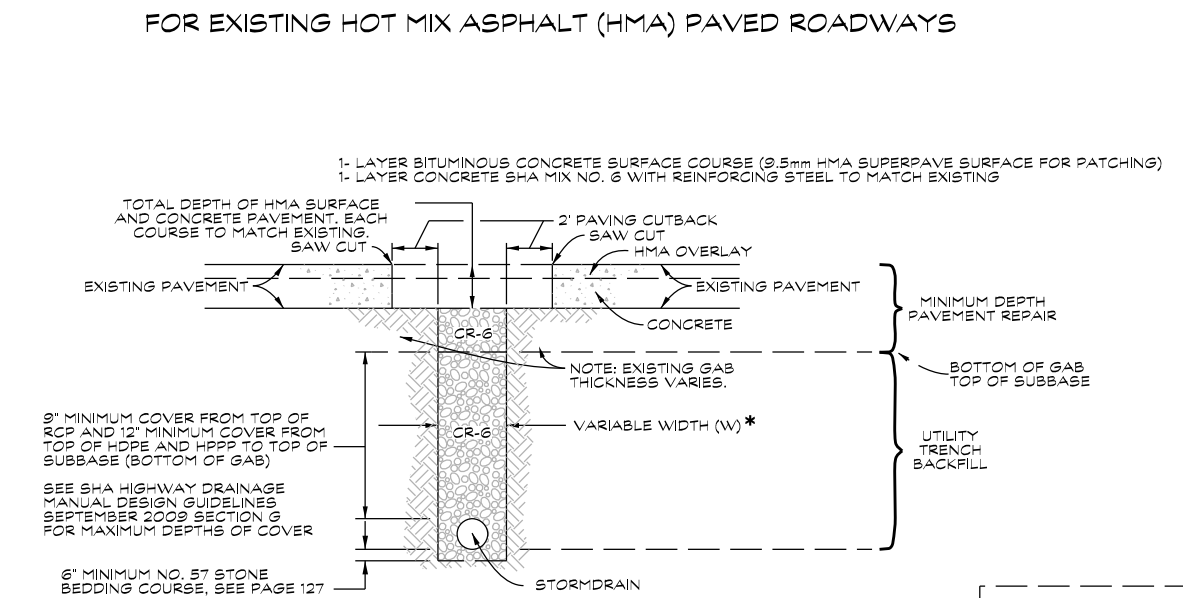
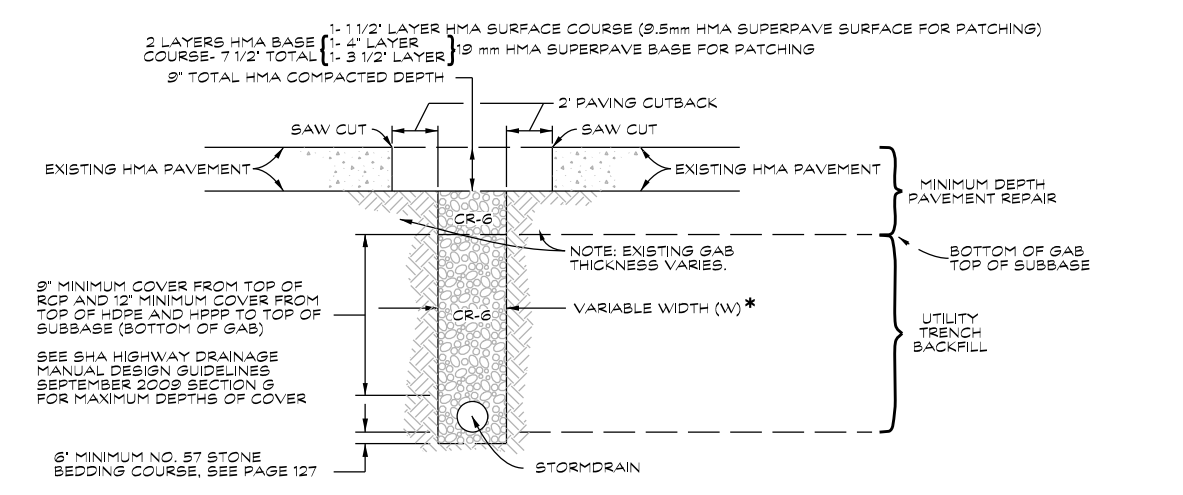


MODIFIED METHOD OF CUTTING AND REPAIRING ROADWAYS FOR STORMWATER MANAGEMENT RETRO-FIT PROJECTS
 BASED ON C.C.D.P.W. ROADS AND STORM DRAINS MANUAL PLATE 47



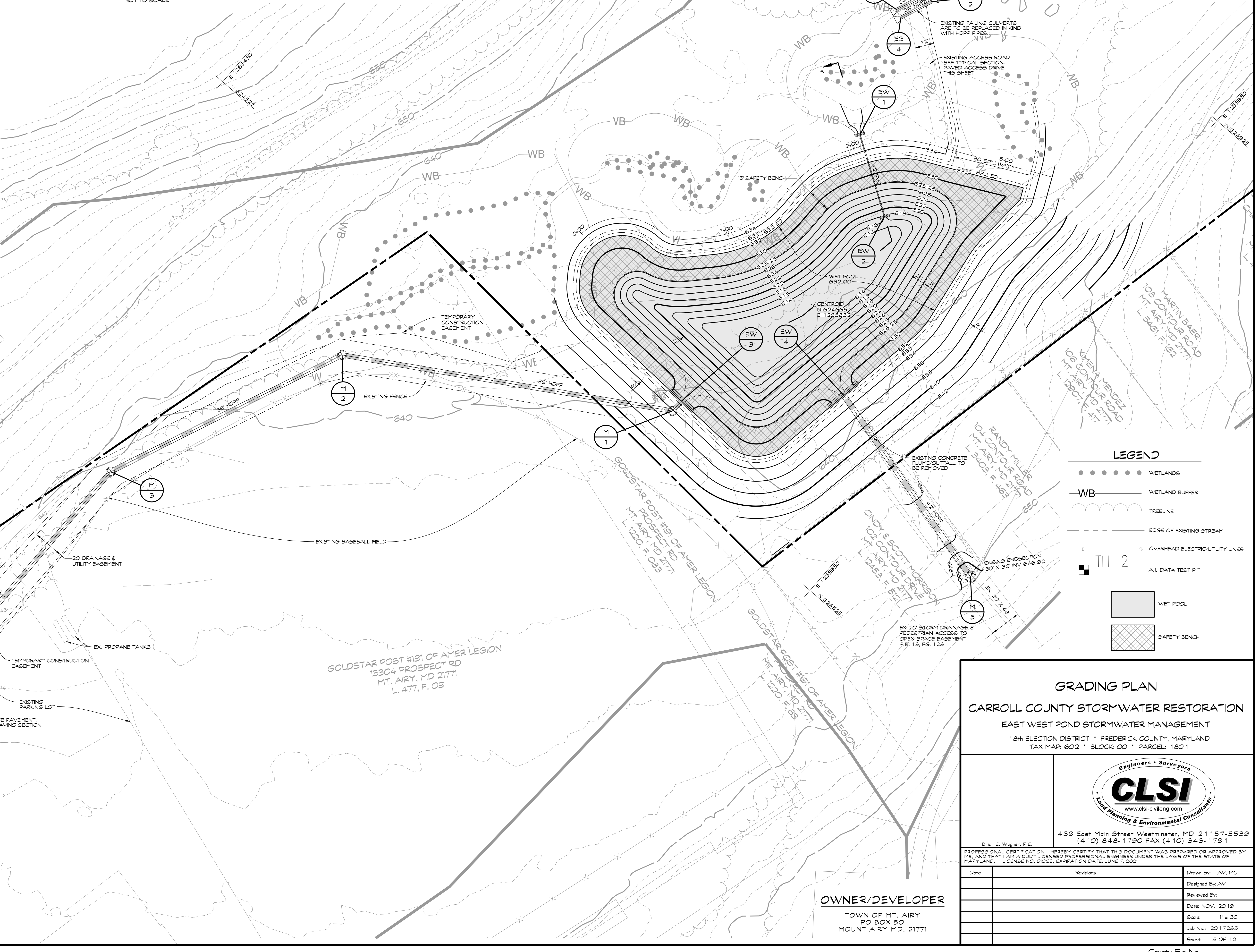
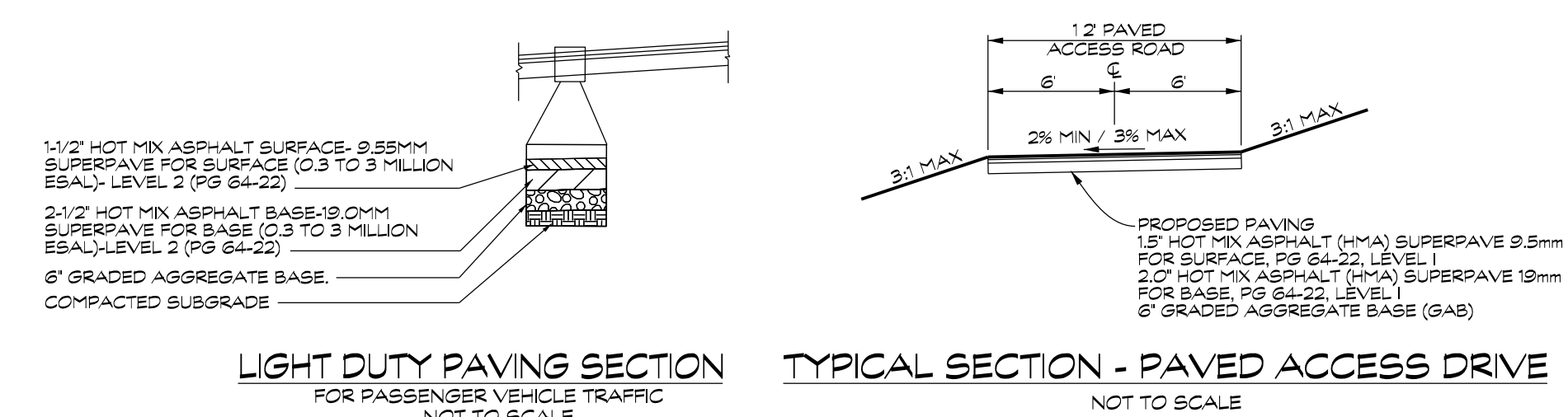
NOTE 1: CUTTING & REPAIRING PAVEMENT, STONE & SOIL REMOVAL, AND SUBGRADE, CURB AND PREPARED SURFACE BACKFILL, AND PAVEMENT PATCH ARE ALL INCLUDED IN LUMP SUM PRICE.

NOTE 2: WHERE UTILITY TRENCHES ARE EXTENDING THROUGH THE HIGHWAY INTO BRANCHING BUREL, THE BRANCHING BUREL SHALL BE CUT THE TOP OF BRANCHING BUREL TO THE TOP OF THE TRENCH. THE TRENCH SHALL BE TOPPED WITH 6" GRADED AGGREGATE BASE (GAB) WITH SEED AND MULCH.

NOTE 3: ABOVE A 42" PIPE A 6" SHARED EASEMENT SHALL BE MAINTAINED TO THE OUTSIDE CORNER OF THE PIPE. OR OUTSIDE DIAMETER PLUS 2 FEET, WHICHEVER IS LESS.

Month B. Conkright III, PE
 SAWS Program Engineer
 C.C. SURVEYORS MFG, SEPT. 16, 2009, MARCH 19, 2014,
 NOV. 19, 2014, JAN. 21, 2016
 (CORRECT REFERENCES APRIL 20, 2016)
 EFFECTIVE DATES: NOV. 19, 2009, JAN. 21, 2015, MAY 20, 2016

128 [86 (AMENDED)]



LEGEND

- WETLANDS
- WB WETLAND BUFFER
- TREE LINE
- EDGE OF EXISTING STREAM
- OVERHEAD ELECTRIC UTILITY LINES
- TH-2 A.I. DATA TEST PIT
- WET POOL
- SAFETY BENCH

GRADING PLAN
CARROLL COUNTY STORMWATER RESTORATION
 EAST WEST POND STORMWATER MANAGEMENT
 18th ELECTION DISTRICT * FREDERICK COUNTY, MARYLAND
 TAX MAP: 602 * BLOCK: 00 * PARCEL: 1801

CLSI
 Engineers • Surveyors
 Land Planning & Environmental Consultants
 www.clsi-cvlleng.com
 439 East Main Street Westminster, MD 21157-5539
 (410) 848-1790 FAX (410) 848-1791

Brian E. Wagner, P.E.

PROFESSIONAL CERTIFICATION: I HEREBY CERTIFY THAT THIS DOCUMENT WAS PREPARED OR APPROVED BY ME AND THAT I AM A DULY LICENSED PROFESSIONAL ENGINEER UNDER THE LAWS OF THE STATE OF MARYLAND. LICENSE NO. 81668, EXPIRATION DATE: JUNE 7, 2022

Date	Revisions	Drawn By: AV, MC
		Designed By: AV
		Reviewed By:
		Date: NOV. 20 19
		Scale: 1" = 30'
		Job No.: 2017285
		Sheet: 5 OF 12

OWNER/DEVELOPER
 TOWN OF MT. AIRY
 PO BOX 50
 MOUNT AIRY MD, 21771